



Astley Road, Hemel Hempstead, HP1 1HU

Offers In Excess Of £400,000

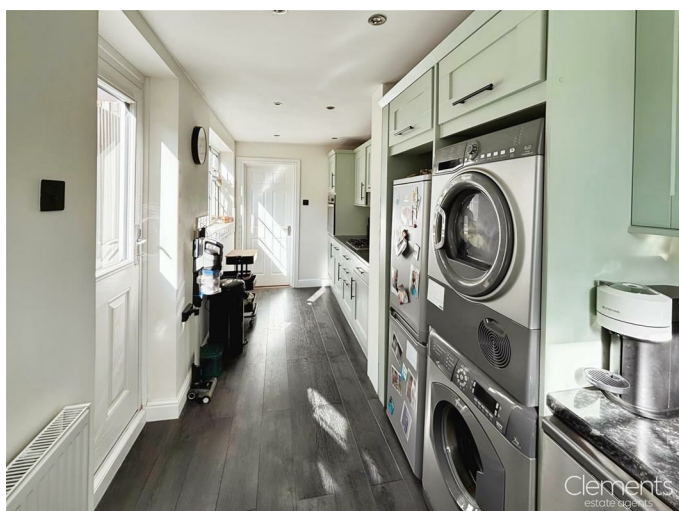
Located close to the Town Centre is this well presented character end of terrace cottage. Boasting three bedrooms, 24'0 living room, 17'10 fitted kitchen, modern fitted bathroom suite, double glazing and gas central heating. Situated within easy reach of Hemel Hempstead train station, the Old Town, the M1, M25 and A41 road links and Gadebridge Park.

Living Room 24'0 max x 10'5 (7.32m max x 3.18m)



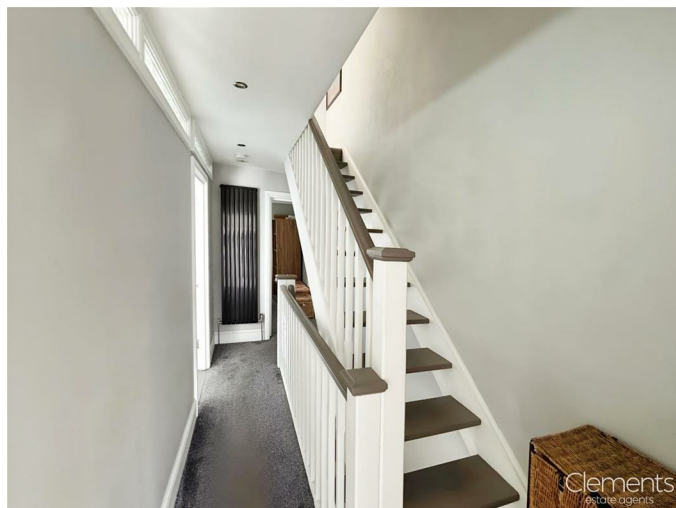
Double glazed bay window, double glazed window, coving, polished floorboards and two radiators.

Kitchen 17'10 x 6'4 (5.44m x 1.93m)



Fitted kitchen with wall and base units and work surfaces to compliment, double glazed window, 1 1/2 bowl sink, tiled splashbacks, electric oven, gas hob with cooker hood over, plumbing for washing machine and dishwasher, double glazed door.

First Floor Landing



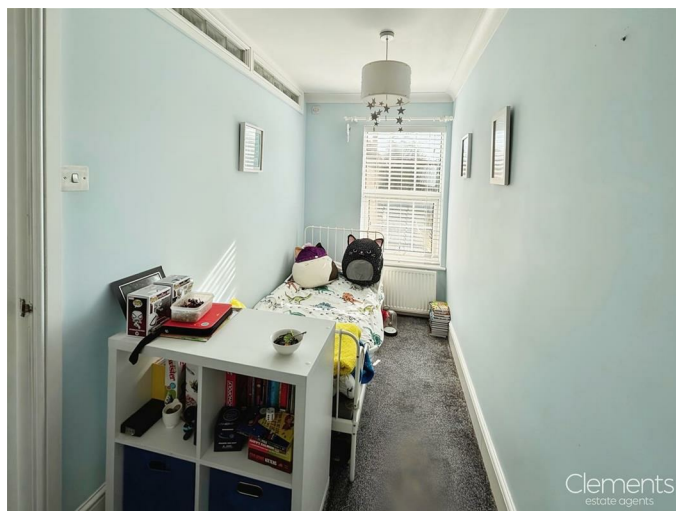
Radiator and stairs to bedroom three.

Bedroom One 10'8 x 9'7 (3.25m x 2.92m)



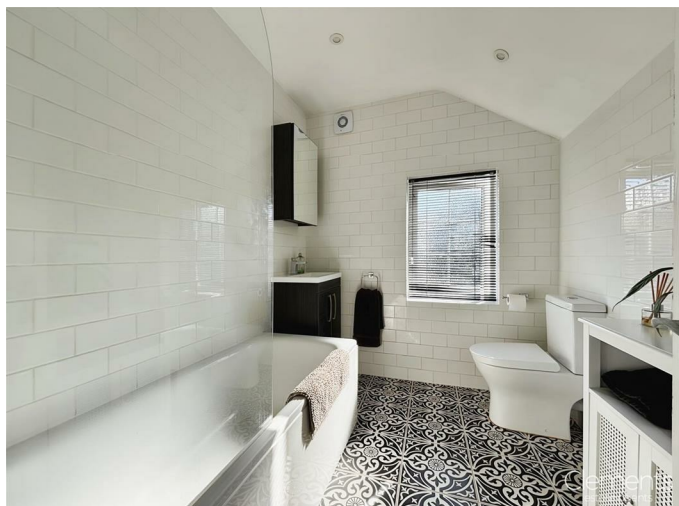
Double glazed window, radiator and coving.

Bedroom Two 13'1 x 5'1 (3.99m x 1.55m)



Double glazed window, radiator and coving.

Bathroom



Frosted double glazed window, panelled bath with shower over, low level wc, wash hand basin with vanity unit, tiled walls and flooring, heated towel rail and mirrored cabinet.

Second Floor Landing

Stairs from first floor landing.

Bedroom Three 14'2 max x 10'8 max (4.32m max x 3.25m max)



Double glazed window velux window, radiator and eaves storage.

Rear Garden



Tiered garden with stone pathway, artificial lawn, patio area, sleepers, flower and shrub borders and shed.

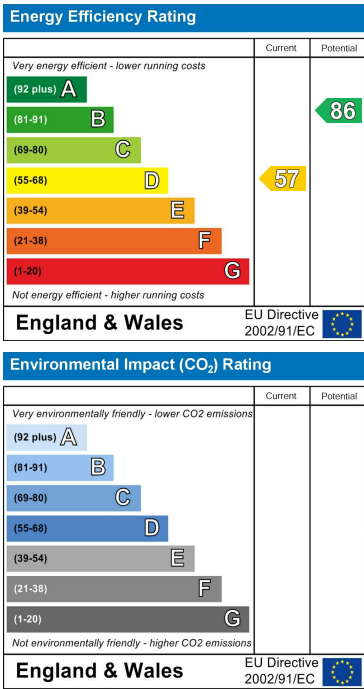
Floor Plan



Area Map



Energy Efficiency Graph



These particulars, whilst believed to be accurate are set out as a general outline only for guidance and do not constitute any part of an offer or contract. Intending purchasers should not rely on them as statements of representation of fact, but must satisfy themselves by inspection or otherwise as to their accuracy. No person in this firms employment has the authority to make or give any representation or warranty in respect of the property.